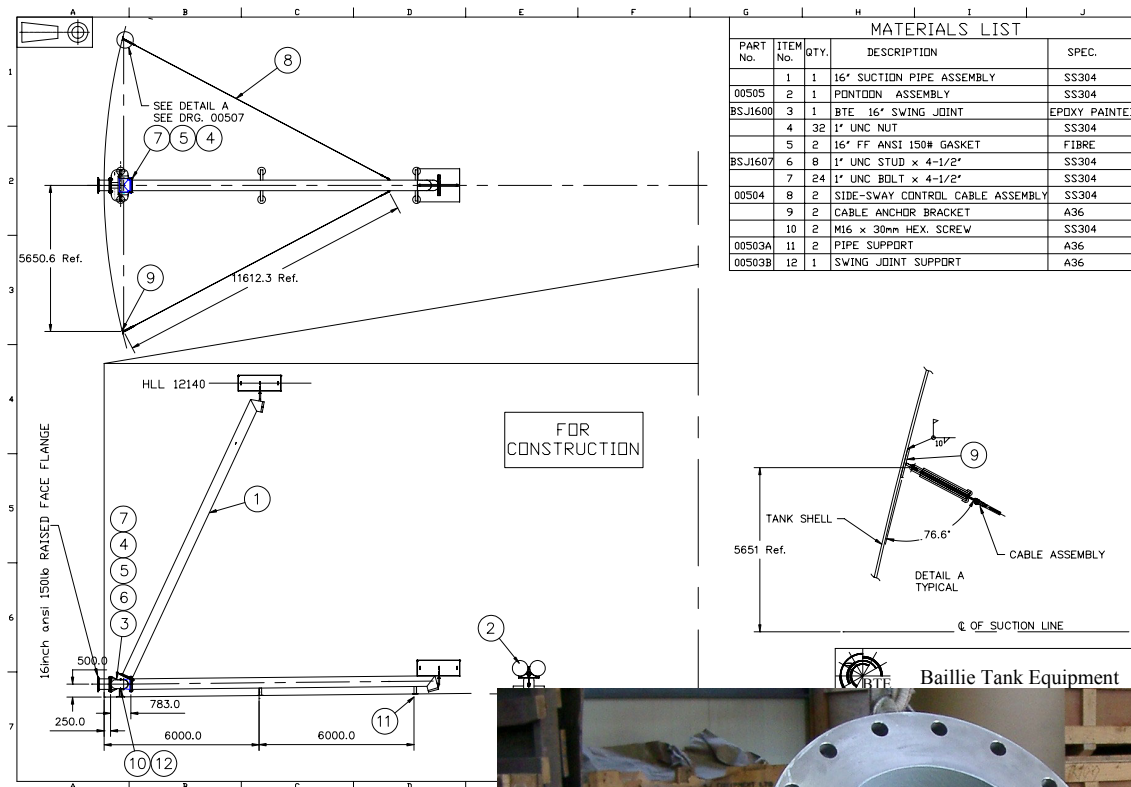


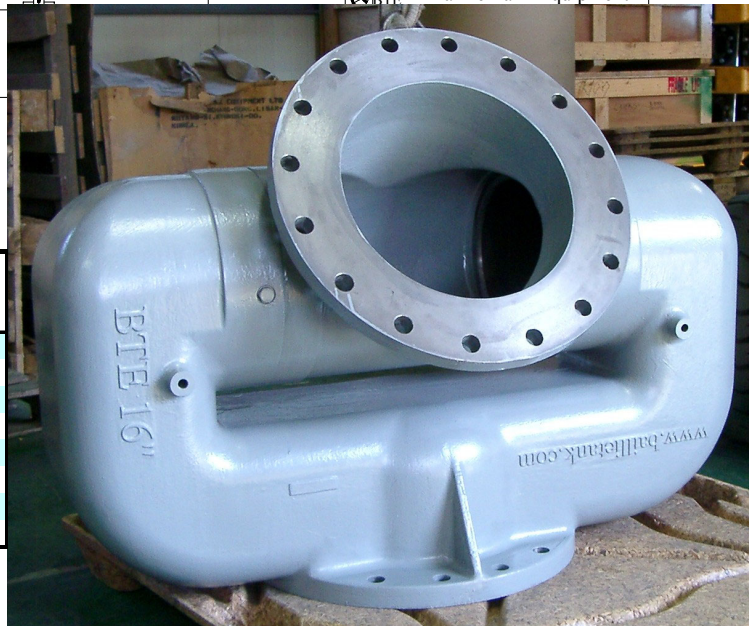
SwingMaster Swing Joints for Floating Suction Lines

BTE SwingMaster central type swing joints are the ideal choice for floating suction lines. Constructed in rugged cast iron with plain Ni-Resist bearings (copper free). BTE SwingMaster cast iron swing joints are internally & externally epoxy painted for Jet A1 service. SwingMaster joints are available in 8" through to 24" size. Larger sizes available on application. All flanges are ANSI 150# Flat Face.



16" SwingMaster ▶

| | METRIC: | INCH: |
|-----------|---|---|
| Size inch | minimum opening in tank for SwingMaster entry | minimum opening in tank for SwingMaster entry |
| 8 | 350 x 460 or Ø570 | 14" x 18" or 23"Ø |
| 10 | 420 x 550 or Ø680 | 16.5" x 21.5" or 27"Ø |
| 12 | 490 x 660 or Ø820 | 19.4" x 26" or 32.5"Ø |
| 14 | 540 x 720 or Ø890 | 21.4" x 28.3" or 35.5"Ø |
| 16 | 610 x 790 or Ø990 | 24" x 32" or 40"Ø |
| 18 | 640 x 890 or Ø1090 | 25.5" x 35" or 43.5"Ø |
| 20 | 710 x 950 or Ø1180 | 28" x 37.5" or 47"Ø |
| 24 | 820 x 1100 or Ø1360 | 33" x 43.5" or 54"Ø |

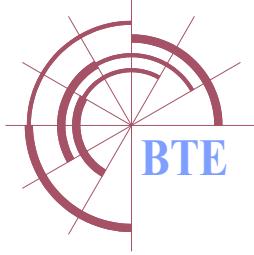


BTE Tank Products include:

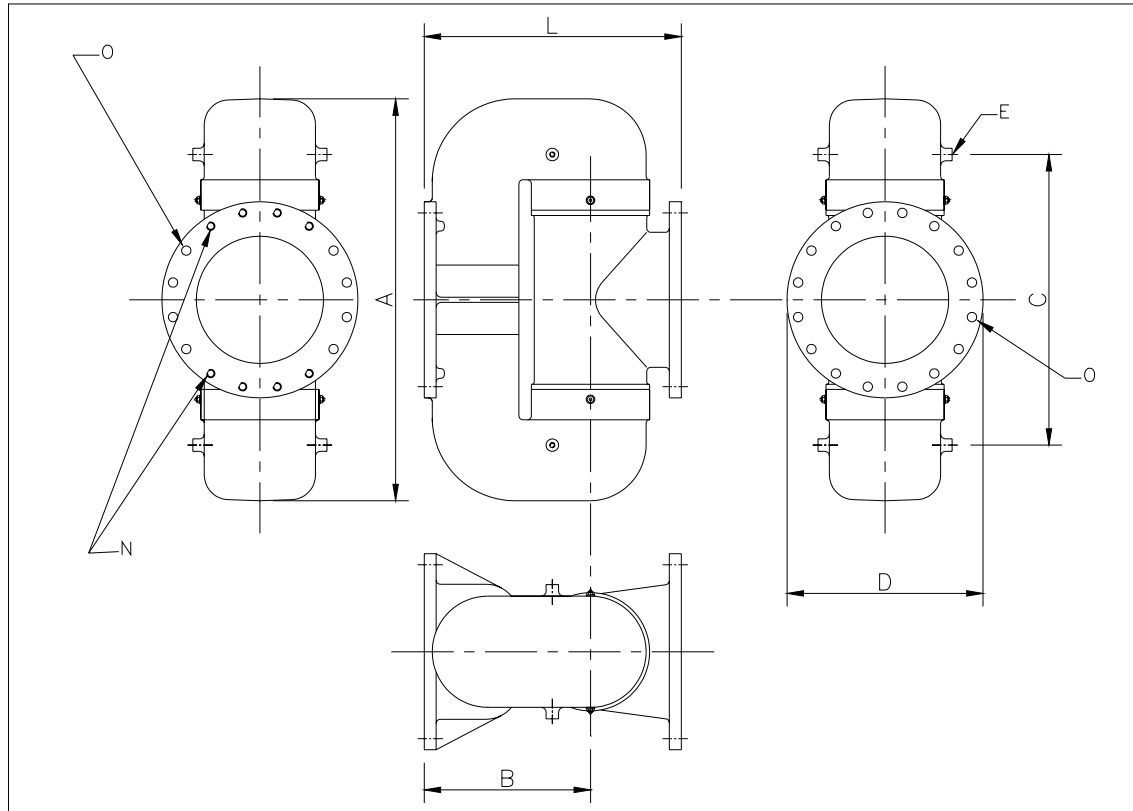
- Aluminium Internal Floating Roofs
- Floating Roof Tank Primary Seals
- Floating Roof Tank Secondary Seals

- Floating Roof Tank Drain Systems
- Floating Roof Tank Fire Foam Systems
- Floating Suction lines & Skimmers





SwingMaster Swing Joints For Floating Suction Lines



METRIC:

| Size inch | DIMENSION mm | | | | | flange tapped holes | flange drilled holes | flange bolt circle | lug tapped holes | Rotation | Weight |
|--------------|--------------|-----|------|-----|------|------------------------|-------------------------|-----------------------|---------------------|----------------|--------|
| | A | B | C | D | L | N | O mm | P.C.D. mm | E | Torque kg-m | kg |
| 8 | 658 | 281 | 482 | 343 | 449 | 4 x 3/4" UNC | 4+ 8 x 22.4dia | 298.45 | 4 x M12 | 5 | 201 |
| 10 | 824 | 338 | 592 | 406 | 538 | 8 x 7/8" UNC | 4+12 x 25.4dia | 361.95 | 4 x M16 | 6.1 | 281 |
| 12 | 1007 | 417 | 707 | 483 | 652 | 8 x 7/8" UNC | 4+12 x 25.4dia | 431.80 | 4 x M16 | 7.3 | 338 |
| 14 | 1083 | 452 | 779 | 534 | 709 | 8 x 1" UNC | 4+12 x 28.6dia | 476.20 | 4 x M16 | 8.5 | 394 |
| 16 | 1224 | 506 | 885 | 597 | 783 | 8 x 1" UNC | 8+16 x 28.6dia | 539.70 | 4 x M16 | 9.7 | 450 |
| 18 | 1377 | 570 | 996 | 635 | 881 | 8 x 1 1/8" UNC | 8+16 x 31.8dia | 577.90 | 4 x M16 | 10.9 | 506 |
| 20 | 1410 | 614 | 1041 | 699 | 940 | 12 x 1 1/8" UNC | 8+20 x 31.8dia | 635.00 | 4 x M20 | 12.1 | 563 |
| 24 | 1714 | 715 | 1229 | 813 | 1090 | 12 x 1 1/4" UNC | 8+20 x 35.0dia | 749.30 | 4 x M24 | 14.6 | 675 |

INCH:

| Size inch | DIMENSION inch | | | | | flange tapped holes | flange drilled holes | flange bolt circle | lug tapped holes | Rotation | Weight |
|--------------|----------------|-------|-------|------|-------|------------------------|-------------------------|-----------------------|---------------------|------------------|--------|
| | A | B | C | D | L | N | O inch | P.C.D. inch | E | Torque ft-lbf | lb |
| 8 | 25.9 | 11.06 | 18.98 | 13.5 | 17.68 | 4 x 3/4" UNC | 4+ 8 x 7/8"dia | 11.75 | 4 x M12 | 36 | 442 |
| 10 | 32.4 | 13.31 | 23.31 | 16.0 | 21.18 | 8 x 7/8" UNC | 4+12 x 1"dia | 14.25 | 4 x M16 | 44 | 619 |
| 12 | 39.6 | 16.42 | 27.83 | 19.0 | 25.67 | 8 x 7/8" UNC | 4+12 x 1"dia | 17.00 | 4 x M16 | 52 | 743 |
| 14 | 42.6 | 17.8 | 30.67 | 21.0 | 27.91 | 8 x 1" UNC | 4+12 x 1 1/8"dia | 18.75 | 4 x M16 | 61 | 866 |
| 16 | 48.2 | 19.92 | 34.84 | 23.5 | 30.83 | 8 x 1" UNC | 8+16 x 1 1/8"dia | 21.25 | 4 x M16 | 70 | 990 |
| 18 | 54.2 | 22.44 | 39.21 | 25.0 | 34.69 | 8 x 1 1/8" UNC | 8+16 x 1 1/4"dia | 22.75 | 4 x M20 | 79 | 1114 |
| 20 | 55.5 | 24.17 | 40.98 | 27.5 | 37.01 | 12 x 1 1/8" UNC | 8+20 x 1 1/4"dia | 25.00 | 4 x M20 | 87 | 1238 |
| 24 | 67.5 | 28.15 | 48.39 | 32.0 | 42.91 | 12 x 1 1/4" UNC | 8+20 x 1 3/8"dia | 29.50 | 4 x M24 | 105 | 1485 |

Baillie Tank Equipment
Sydney, Australia
Tel: +61 2 9327 5481
Fax: +61 2 9327 5488
Sydney@BaillieTank.com

Baillie Tank Equipment
Seoul, Korea
Tel: +82 31 949 6854
Fax: +82 31 949 6866
Seoul@BaillieTank.com

Baillie Tank Equipment
Beaumont TX, USA
Tel: 409 722 6050
Fax: 409 722 6144
Beaumont@BaillieTank.com